



EPA 325 Fence-line Monitoring



Please visit our website for our instructional video at
www.SGSGALSON.com

- Unpack items and verify contents against the packing list
- Tubes are located inside the tube holders



Tubes



Tube holders

- Save all items for return shipment, including box with return shipping label.
- If this is your first kit, you have received the appropriate amount of shelters requested. Shelters should be installed approximately 1.5 to 3 meters from the ground.



Note: Until you are ready to deploy the tubes, they should be stored in a climate-controlled, solvent free area. Allow all desorption tubes to equilibrate with ambient temperature for at least 30 minutes prior to deployment.

- Put on provided gloves prior to handling the media.



- Tube holders will be labeled by location in using your predetermined numbering scheme. They will also indicate the serial number of the tube inside.

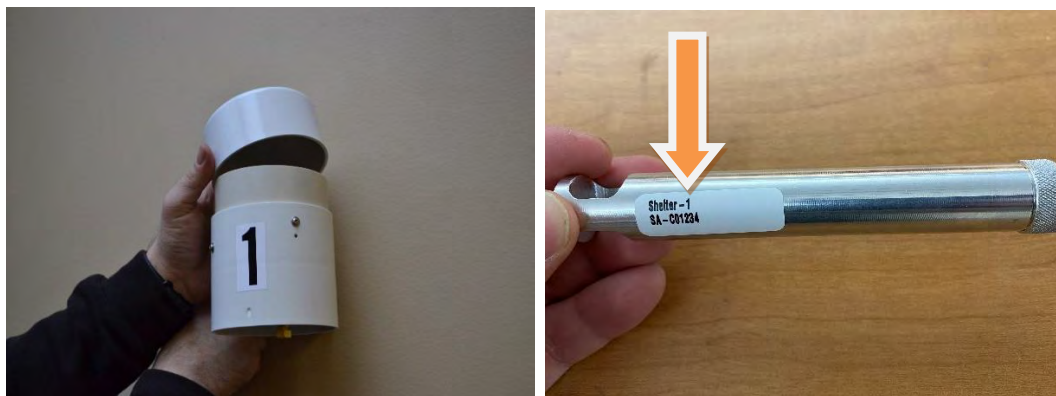


*SA- stands for Sample
DU- stands for Duplicate
FB-stands for Field Blank

WARNING

Never use any method to mark the actual thermal desorption tube. This may compromise your sample and void your results.

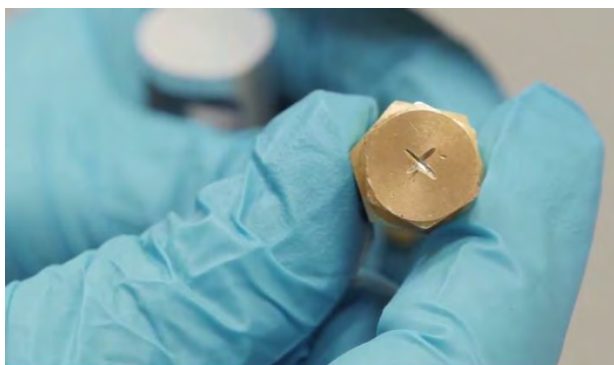
- Remove the top from the shelter.



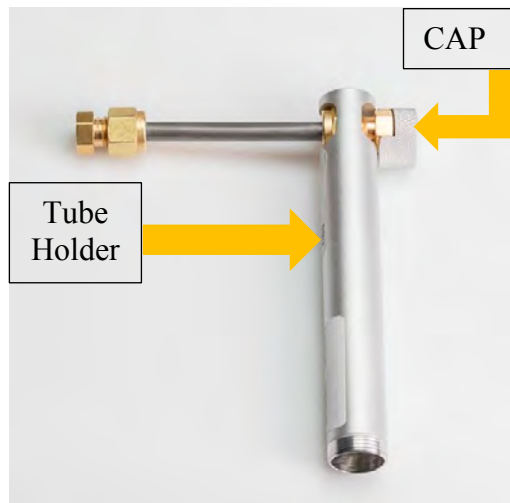
- Remove the first tube holder from the padfolio and verify that the shelter number matches the one on the label.
- Unscrew the top of the tube holder and remove the thermal desorption tube.



- The end cap with the “X” is the end cap that should NEVER be removed.



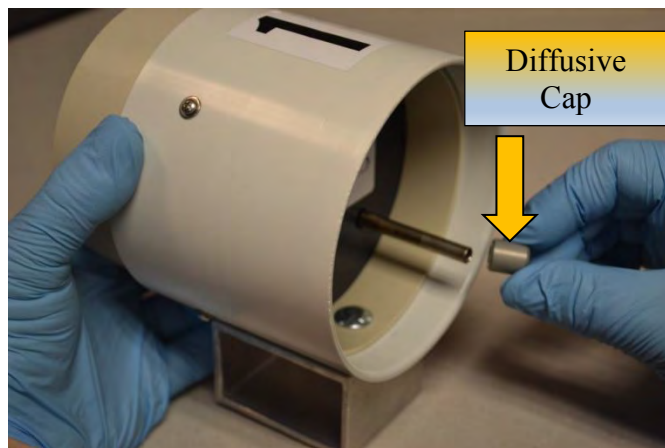
- Field blanks will not have any end caps removed, you will only have two blanks per complete set of samples.
- Field blanks should be deployed at two different quadrants, 90 degrees and 270 degrees and left at the sampling location for entire sampling period.
- One duplicate is required for every ten samples for each sample set.
- Using the tube holder, slide the tube through the opening and use the cap of the holder as the second piece of your wrench set as seen in the next photo.



- Place the tube, open end down, in one of the small holes built into the shelter. The tube should snap in easily, and then push until the end cap of the tube is resting on the holder.



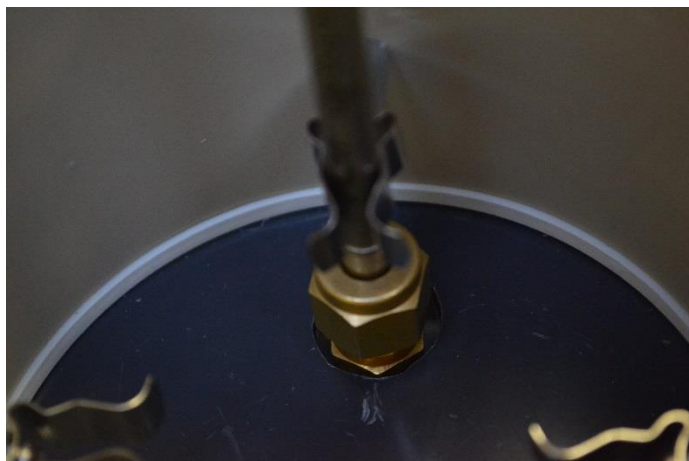
- Firmly place a diffusion-cap on the open end of the tube, which should now be hanging out of the bottom of the shelter. Be sure all tubes are still pushed down when done applying the diffuser caps, all tubes should be even with each other.



- Store the end caps in the tube holder for use after sampling and reinstall the holder's cap.



- Deploy samples and duplicates in the same manner listed above.
- Do NOT remove either end cap of the field blank tube, we have provided a larger hole in the shelter for deployment of your field blank.



- Place the top back on the shelter and move on to your next location, repeat previous steps until all tubes are deployed.
- Record time and date on the chain of custody for each tube deployed.

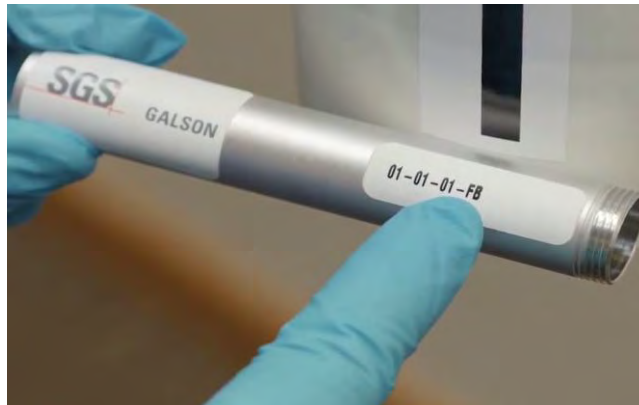
Site Name: _____ Client Account No.: _____ Purchase Order No.: _____ Credit Card: _____		Phone No.: _____ Cell No.: _____ Happy Refinery 12345		Average: _____ Will there be a: _____	
Email Results To: Susan Jones Email Address: sjones@abc.com		Credit Card on File: <input type="checkbox"/>		Other (please specify): _____	
Sample Identification	Collection Medium	Type of Sample	Date/Time Deployed	Date/Time Retrieved	Analysis Requested
SA	TD Tube	SA	2/11/17 8:07		Benzene
1-DU	TD Tube	DU			Benzene
01-FB	TD Tube	FB			Benzene
02-01-SA	TD Tube	SA			Benzene
03-01-SA	TD Tube	SA			Benzene
04-01-SA	TD Tube	SA			Benzene
	TD Tube	SA			Benzene
	TD Tube	SA			Benzene
	TD Tube	SA			Benzene
	TD Tube	SA			Benzene
	TD Tube	DU			

- Place all your empty tube holders and your chain of custody in your padfolio and store in a climate controlled solvent free area.
- Retrieve your samples 14 to 16 days after deployment, at the same approximate time. Bring both the padfolio for the samples being retrieved, as well as the new set being placed in shelters.
- To pack your first set of samples, you will need to first remove the diffusive cap from the samples and place them back in their bag.

- Remove the tube from the shelter and reinstall the end cap on the tube utilizing the tube holder wrench set.
- Complete the chain of custody by entering the date and time samples were retrieved. Be sure to print, sign, and date all pages.
- Once the tube is back in the tube holder, place the holders back in the padfolio for shipment to SGS Galson.



- It is imperative that the field blank tube gets placed back in the holder labeled "FB".



- When you are ready to deploy your new set of tubes, follow the same steps listed above.
- Place your padfolio with samples in the provided pre-labeled shipping box and send back to SGS Galson.



You will automatically receive a new set of tubes every two weeks.

Questions? Contact SGS Galson by phone

1-888-432-5227

Or

IH Live Chat at

www.SGSGALSON.com