

# COMPREHENSIVE SERVICES FOR THE BUILT ENVIRONMENT

FACT SHEET - 2021



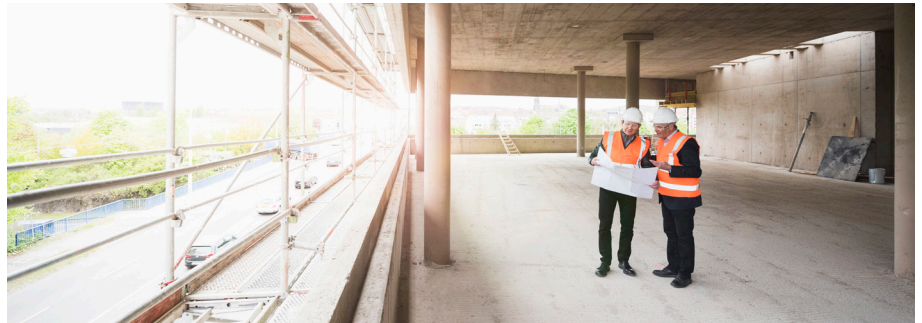
## COMPREHENSIVE SERVICES

- Litigation Support
- Project Data Review and Consultation
- Failure Analysis
- Industrial Control Problem Consultation
- Packaged Goods Content Verification
- Product Testing
- Perimeter Monitoring
- Simulation Studies (Asbestos, Metals, Organics, Particulate, etc.)
- Analytical Method Development
- Environmental Compliance Outside of Standard Protocols
- Sampling Apparatus Design and Fabrication
- Project Management and Facilitation
- Nanocomponent Evaluation
- Project Publication Support
- White Paper Studies
- Onsite Laboratory for Natural Disasters or Remote Analysis
- Food Microbiology (Bacteria, Fungi, etc.)
- Food Adulterant Testing
- Vitamin and Supplement Contamination and Adulteration
- Drinking Water and Recreational Water Analyses
- Biocontaminant and Biopollutant Chamber Studies
- Fungal Resistance Testing
- Media Sales and Equipment Rental



## ASBESTOS AIR

- PCM Airborne Fiber Count (OSHA ID 160)
- PCM Airborne Fiber Count (NIOSH 7400A)
- PCM Fiberglass Count (NIOSH 7400B)
- TEM Qualitative Analysis
- TEM AHERA (EPA 40 CFR Part 763)
- TEM Modified-AHERA (NOA Perimeter Monitoring)
- TEM Yamate Level I and II (EPA Contract 68-02-3266)
- TEM PCM-Equivalent (NIOSH 7402)



- TEM ISO 10312 (Direct Preparation)
- TEM ISO 13794 (Indirect Preparation)
- Rotometer Calibration



## ASBESTOS BULK

- PLM (OSHA ID 191)
- PLM (EPA 600/R-93-116)
- PLM (EPA 600/M4-82-020)
- NESHAP 400 Point Count
- 400 Point Count with Gravimetric Sample Reduction
- 1000 Point Count with Gravimetric Sample Reduction
- Cincinnati Method (Vermiculite: EPA 600/R-04/004) PLM and TEM
- California ARB Method 435 with 400 Point Count
- California ARB Method 435 with 1000 Point Count
- TEM CARB 435 Preparation
- TEM Qualitative Analysis
- TEM Semi-Quantitative "Chatfield" Method
- TEM Quantitative (EPA 600/R-93/116)
- TEM NOB (NYELAP 198.4)
- ISO 22262-1 TEM Section
- ISO/DIS 22262-2 TEM Section



## ASBESTOS SETTLED DUST

- TEM Microvac Fibers/Area (ASTM D5755)
- TEM Surface Wipe Fibers/Area (ASTM D6480)
- TEM Carpet Fibers/Area (EPA 600/J-93/167, Ultrasonication Extraction Test)



## ASBESTOS WATER

- TEM Drinking Water (EPA 600/R-94/134)
- TEM Water (EPA 100.1)
- TEM Drinking Water (EPA 100.2)
- TEM Waste Water (Modified EPA 100.1 Protocol)
- TEM Waste Water (EPA Title 22)



## ASH & CHAR

- Combustion Products, Limited Particle ID by PLM
- Combustion Products, Full Particle ID by PLM
- Opaques Quantitation by PLM
- Carbon Black Fugitive Emissions (ASTM D6602)



## PARTICLE & MATERIAL

### CHARACTERIZATION & IDENTIFICATION

- Particulate Characterization by TEM, SEM, micro-FTIR, PCM, and PLM
- Particle Size Distribution by TEM and SEM
- Particulate Contamination Investigations
- Fugitive Particulate Emissions Studies
- Respirable Dust by Gravimetric / IOM Gravimetric
- Nuisance Dust
- Crystalline Silica in Air (Quartz, Cristobalite and Tridymite)
- Total Suspended Particulate
- Suspended Particulate Matter (SPM: PM-10 / PM-2.5)

- Coke Dust
- Zinc and Other Metallic Whiskers
- Nano-Silver (Wires and Spheres)
- pH Analysis
- White Powder Identification
- Microchemical Analysis
- Glass Analysis and Comparison
- Fiber Analysis
- Soil Analysis
- Paint Analysis
- Photomicrography



## FORENSIC SCIENCE

- Gunshot Residue (ASTM E1588-10e1)
- Trace Evidence Analysis
- Paint Forensics / Accident Reconstruction



## LEAD & METALS

- Metals by Atomic Absorption Spectroscopy (AA)
- Metals by Inductively Coupled Plasma Spectroscopy (ICP)
- Metals by Graphite Furnace AA (GFAA)
- Mercury by Cold Vapor AA
- Hexavalent Chromium by Ion Chromatography (IC) (OSHA ID 215)
- Semi-Quantitative Scan 23 Metals (EPA 6010B)
- Welding Fumes 13 Metals (OSHA ID 125G)
- Testing for Metals (Clothes, Books, Cosmetics, etc.)
- Houseware Product Testing for Metals (Ceramics, Cookware, Glassware, Brass Fixtures, etc.)
- Food Product Testing for Metals (Candy, Spices, Non-perishable Foods, etc.)



## WASTE EXTRACTION

- STLC Extraction (CA WET)
- STLC Lead (CA WET / EPA 7420)
- STLC CAM 17 Metals (CA WET / EPA 6010B / 7470A)
- TCLP Extraction (EPA 1311)
- TCLP Lead (EPA 1311 / 7420)
- TCLP RCRA 8 Metals (EPA 1311 / 6010B / 7470A)
- Compositing of Waste Samples



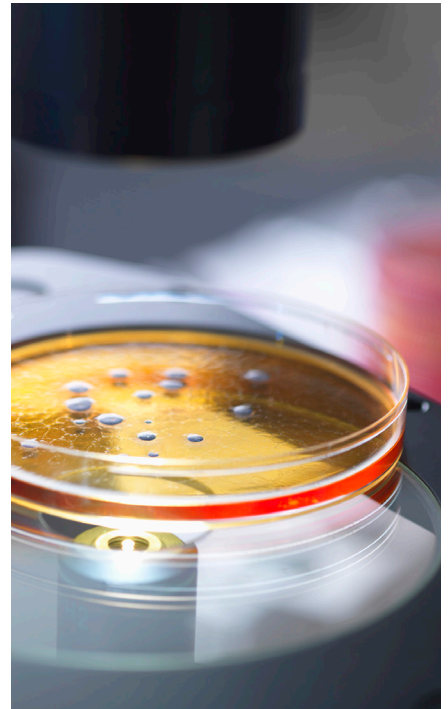
## WASTE CHARACTERIZATION

- TTLC (EPA 6010 and 7000 Series)
- CAM 17 Metals, Title 22 (EPA 6010 and 7000 Series)
- RCRA/EPTOX 8 Metals (EPA 6010 and 7000 Series)



## MICROBIOLOGY

- Viable Fungi Colony Count / Genus ID / Species ID
- Non-viable Fungi (Air, Bulk, Surface)
- PCR Fungal Identification and Quantification
- PCR Environmental Relative Moldiness Index (ERMI™) Panel
- PCR Custom Panels and Panel Recommendation
- Bacteria Colony Count / Gram Stain / Microorganism Identification
- Bacteria Qualitative Sewage Screen by MUG (Presence/Absence) M117
- E. coli and Total Coliform by MUG Method
- E. coli and Total Coliform by Colilert Test with Quanti-Tray Method
- Enterococcus by Enterolert Test with Quanti-Tray Method
- Legionella by Viable Culture
- Legionella by Polymerase Chain Reaction (PCR)
- Bacteroides by Polymerase Chain Reaction (PCR)
- Pseudomonas by Pseudalert Test with Quanti-Tray Method
- USP 797 Compliance Support
- Plant Pathology
- Antimicrobial Activity and Efficacy of Plastics (ANSI JIS Z 2801)
- Activity of Incorporated Antimicrobial Agents in Polymeric or Hydrophobic Materials (ASTM E2180)
- Mildew (Fungus) Resistance of Paper and Paperboard (ASTM D2020)
- Ability of Indoor Materials to Support Microbial Growth in an Environmental Chamber (ASTM D6329)
- Resistance to Fungi of Synthetic Polymeric Materials (ASTM G21)
- Resistance to Mold on the Surface of Interior Coatings in an Environmental Chamber (ASTM D3273)



- Surface Disfigurement of Paint Films by Fungal or Algal Growth, or Soil and Dirt Accumulation (ASTM D3274)
- Bactericidal / Fungicidal / Mycobactericidal / Sporicidal Potencies of Liquid Chemical Microbicides (ASTM E2111)
- Bactericidal / Fungicidal / Mycobactericidal / Sporicidal / Virucidal Activities of Liquid Chemical Germicides (ASTM E2197)

SGS is the world's leading inspection, verification, testing and certification company. SGS is recognized as the global benchmark for quality and integrity. With more than 89,000 employees, SGS operates a network of over 2,600 offices and laboratories around the world.

**TO FIND OUT MORE ABOUT SGS  
FORENSIC LABORATORIES SERVICES  
CONTACT +1 800 827 3274,  
EHS.CLIENTCARE@SGS.COM OR VISIT  
WWW.SGSGALSON.COM/BUILT-ENV**

# SGS

WHEN YOU NEED TO BE SURE