

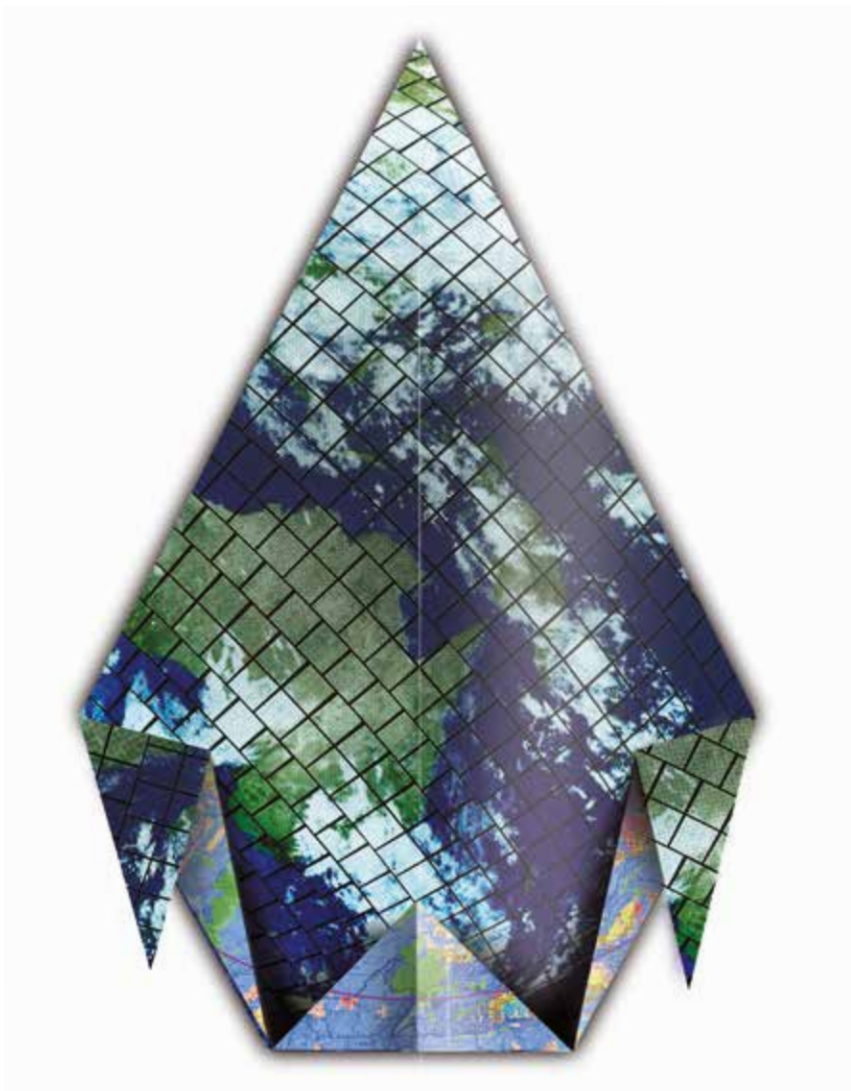
SGS E-DATA AND SGS ENVIRONMENTAL DATA MANAGEMENT SERVICES

**SHAPING CLEAR AND CONCISE DATA FOR COST
EFFECTIVE DECISION MAKING**

SGS

MANAGE YOUR ENVIRONMENTAL DATA EFFECTIVELY AND RESPOND MORE EFFICIENTLY

From the air we breathe to the water we drink, the environment around us can be monitored, measured and tested. This valuable data allows us to manage and respond to our changing environment. SGS enables you to make the best environmental decisions by planning, collecting, organising, storing and displaying your data in a simple, easy to understand format. SGS Environmental Data Management Services and SGS E-Data allow you to see data more clearly, identify problems faster and implement solutions more efficiently.



HOW WE STRUCTURE YOUR DATA MANAGEMENT

SGS can help you control and coordinate every area of your environmental data, including:

- Planning data collection schedules
- Collecting environmental samples
- Providing reliable scientific data
- Keeping your data secure
- Displaying your data intelligently on maps, charts and reports
- Allowing you to visualise your data as information
- Ensuring data clarity
- Accessing information 24/7 via web dashboards

CLARITY FROM START TO FINISH

SGS E-Data provides you with a data management solution that is specific to your situation. We listen to what you are trying to achieve and make sure you get data clarity from field staff to boardroom. Our data solutions answer your vital questions:

- Where are your environmental problems?
- Do you comply with national/regional/local legislation?
- Is all relevant data being recorded accurately?
- What is the best way to trend data meaningfully?
- How can data be presented clearly and to a wider audience via the web?
- Does our data quality auditing indicate if we have missed collecting any critical data?

TECHNOLOGY THAT DELIVERS

Because SGS operates and manages the technology platform, you can implement best practice without increasing your infrastructure costs. It's technology that delivers:

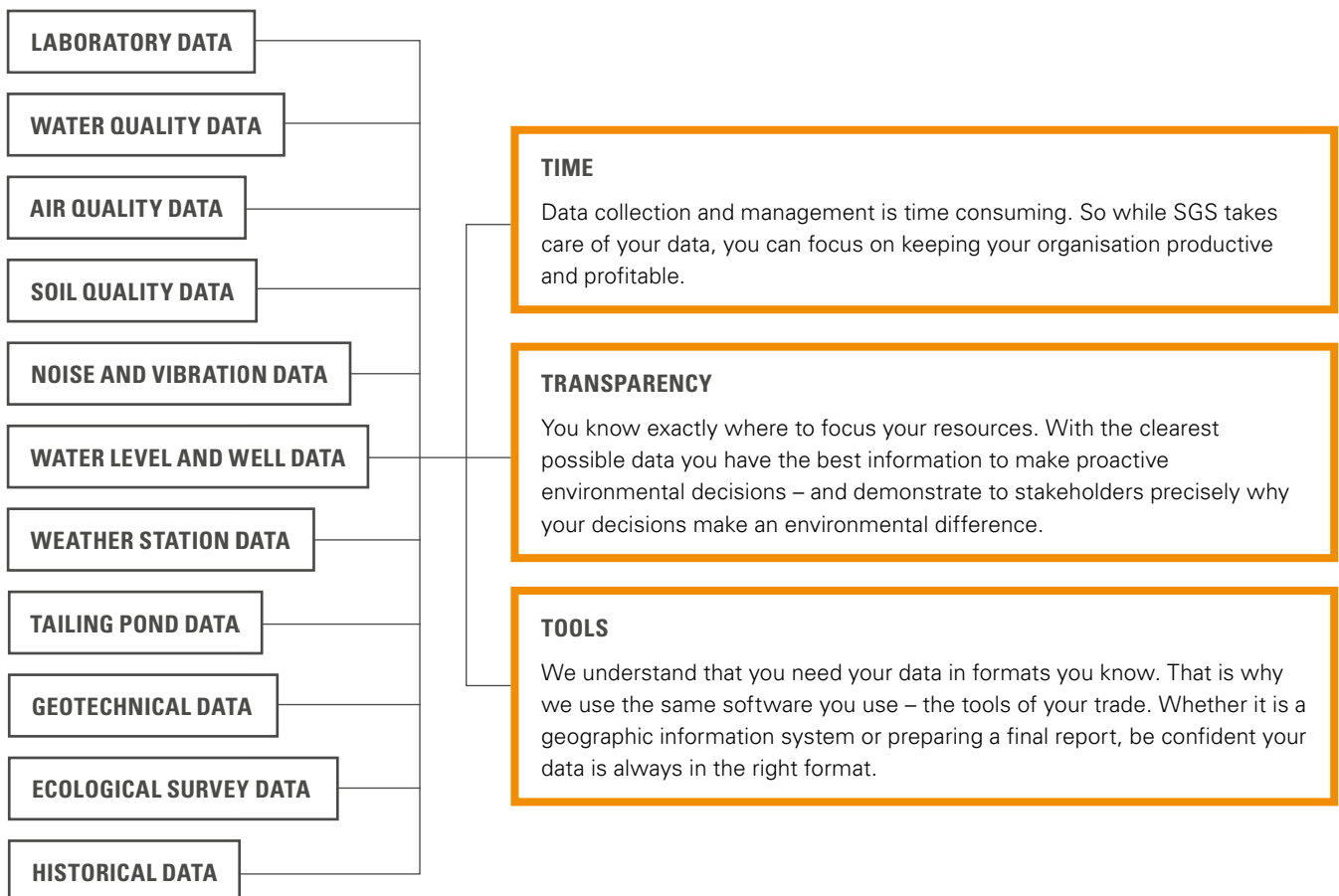
- Secure web-portal access to data 24/7
- Customised and wide ranging reporting options
- Spatial mapping of data
- Real-time data feeds and trending
- Automated e-mail notifications and reports

SGS DATA MANAGEMENT SAVES YOU TIME

SGS E-DATA – EVERY BUSINESS DEMANDS UNIQUE SOLUTIONS

Your business is unique and so its environmental data management solution needs to be unique. We work with you to identify your requirements and design SGS E-Data dashboards that achieve everything your business demands.

From field data collection to monthly operational statistics, regulator reports to boardroom presentations – you can be confident in the quality and integrity of your data. Securely stored and available whenever you need it, our SGS E-Data service gives you all the tools for a competitive edge in environmental operations.



INTRODUCTION & MAP

Introduction

This Dashboard displays charts, widgets for report downloads and a map.

The first section displays two time series charts, one grouped by location, the other grouped by analyte. Each graph displays one analyte or location. Other analytes/locations can be viewed by clicking on the tabs along the top of each chart. By moving the mouse over the graph, you can view the concentrations of the analytes of interest on a particular date. In the legend the sites are clickable and can be turned off or on. The charts include water quality guidelines where appropriate.

The second section contains reporting widgets. You can download the analytical results or an exceedance report in the available formats.

The map to the right of this text displays the locations of the monitoring stations. Each station has an info template displayed by clicking the mouse on the point. It contains information about the stations or could display a field photo (see location B-30 for an example).



THE SERIES CHARTS

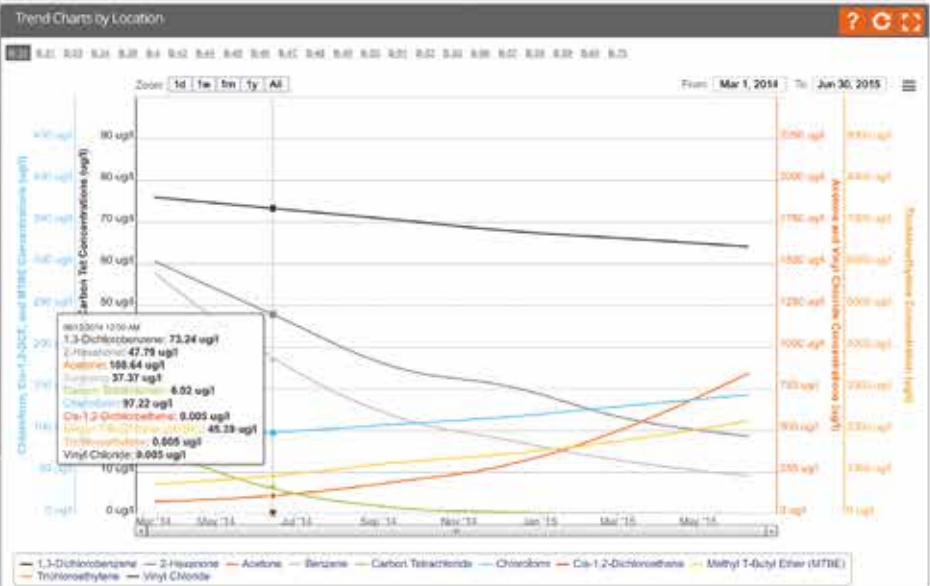
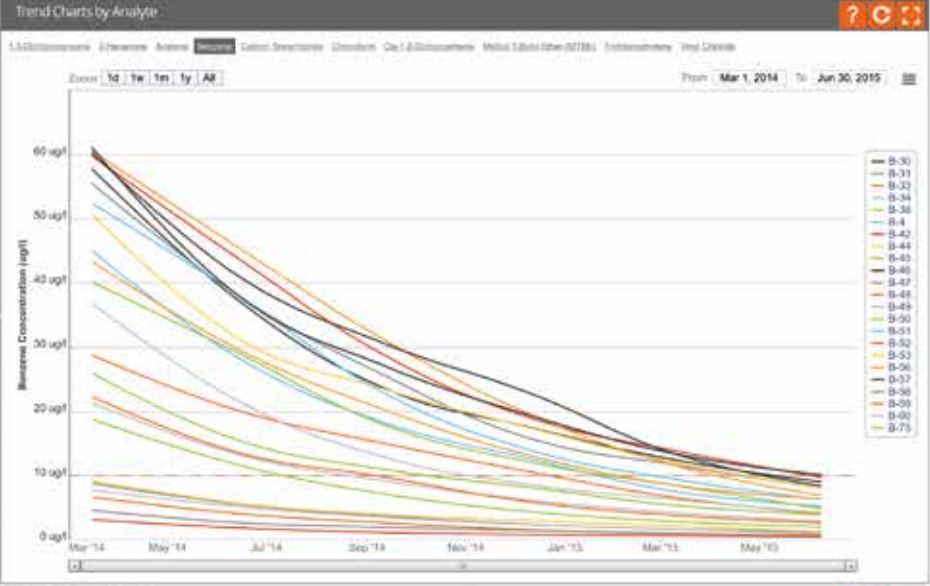
Action Levels

The dashed red lines on the Trend Charts by Analyte widget indicates the Site-Specific Action Levels that are applicable for this project. These action levels are listed below for reference:

- 1,3-Dichlorobenzene = 50 ug/l
- 2-Hexanone = 70 ug/l
- Acetone = 250 ug/l
- Benzene = 10 ug/l
- Carbon Tetrachloride = 1.0 ug/l
- Chloroform = 12 ug/l
- Cis-1,2-Dichloroethane = 70 ug/l
- Methyl T-Butyl Ether (MTBE) = 200 ug/l
- Trichloroethylene = 70 ug/l
- Vinyl Chloride = 5 ug/l

Location Key

Location ID	Location Name
B-30	West Field - Fines Tank
B-31	West Field - Magna Oak
B-32	West Field - Southern End
B-34	West Field - Centre
B-38	West Field - Northern End
B-4	North Field - Cottage Tank
B-42	North Field - In-Front of Cottage
B-44	North Field - Centre West
B-45	North Field - Main Tank
B-46	North Field - River Inflow
B-47	North Field - Centre East
B-48	North Field - River Bend
B-49	North Field - Behind Cottage
B-50	Main Field - Lake
B-51	Main Field - Road/Walk
B-52	Main Field - Inner Loop
B-53	Main Field - Ice House
B-56	Main Field - Woodcock Hill
B-57	Main Field - River Drive
B-58	Main Field - Opposite Kitchen Garden
B-59	Main Field - Front Lawn
B-60	Gardens - Undernet
B-75	Gardens - Old Moss



REPORTS

Raw Data Download Cross-tabular Exceedence Report Statistics Report

Demo Analytical Results Groundwater
 Last Download: 2016-02-26 19:24:01 GMT+1
 Run Time: 1.2 seconds
 File Size: 1.93 MB
 Records: 1,289
 Report Parameters: none

Demo - Groundwater Exceedence Report
 Last Download: 2016-04-28 01:34:42 GMT+2
 Run Time: 3.9 seconds
 File Size: 49 KB
 Records: --

Demo - Analytical Statistics Report
 Last Download: 2016-02-26 16:57:46 GMT+1
 Run Time: 15.6 seconds
 File Size: 818.57 KB
 Records: --

CURRENT COMPLIANCE (ADVANCED FEATURE)

Most Recent Sampling - Acetone Compliance Groundwater Quality Action Levels

These Exceedence Traffic Light reports can compare the groundwater results against site-specific, regional, national or international regulatory guidelines and threshold limits.

In this example, two analytes in the groundwater results dataset which are compared against dummy action levels:
 Acetone = 350 ug/l
 MTBE = 200 ug/l

Historic Groundwater Exceedences

CHEMICAL_NAME	SYS_LOC_CODE	SAMPLE_DATE	REPORT_RESULT_TEXT	REPORT_RESULT_UNIT
Acetone	B-38	3/10/2015 12:00:00 AM	672.84	ug/l
Acetone	B-42	3/10/2015 12:00:00 AM	431.77	ug/l
Acetone	B-44	3/10/2015 12:00:00 AM	801.29	ug/l
Acetone	B-45	3/10/2015 12:00:00 AM	372.26	ug/l
Acetone	B-46	3/10/2015 12:00:00 AM	475.11	ug/l
Acetone	B-47	3/10/2015 12:00:00 AM	393.05	ug/l
Acetone	B-49	3/10/2015 12:00:00 AM	371.40	ug/l
Acetone	B-51	3/10/2015 12:00:00 AM	585.75	ug/l
Acetone	B-53	3/10/2015 12:00:00 AM	732.76	ug/l
Acetone	B-56	3/10/2015 12:00:00 AM	447.22	ug/l
Acetone	B-57	3/10/2015 12:00:00 AM	623.96	ug/l
Acetone	B-58	3/10/2015 12:00:00 AM	798.38	ug/l
Acetone	B-59	3/10/2015 12:00:00 AM	737.44	ug/l
Acetone	B-60	3/10/2015 12:00:00 AM	883.82	ug/l
Acetone	B-30	6/8/2015 12:00:00 AM	841.59	ug/l
Acetone	B-31	6/8/2015 12:00:00 AM	468.76	ug/l
Acetone	B-34	6/8/2015 12:00:00 AM	375.37	ug/l
Acetone	B-36	6/8/2015 12:00:00 AM	668.83	ug/l
Acetone	B-42	6/8/2015 12:00:00 AM	649.85	ug/l
Acetone	B-44	6/8/2015 12:00:00 AM	1062.94	ug/l
Acetone	B-45	6/8/2015 12:00:00 AM	629.81	ug/l
Acetone	B-46	6/8/2015 12:00:00 AM	753.26	ug/l
Acetone	B-47	6/8/2015 12:00:00 AM	521.81	ug/l
Acetone	B-49	6/8/2015 12:00:00 AM	593.82	ug/l
Acetone	B-50	6/8/2015 12:00:00 AM	419.00	ug/l
Acetone	B-51	6/8/2015 12:00:00 AM	719.33	ug/l
Acetone	B-53	6/8/2015 12:00:00 AM	984.72	ug/l
Acetone	B-56	6/8/2015 12:00:00 AM	678.83	ug/l
Acetone	B-57	6/8/2015 12:00:00 AM	984.26	ug/l
Acetone	B-59	6/8/2015 12:00:00 AM	1101.18	ug/l
Acetone	B-59	6/8/2015 12:00:00 AM	1194.96	ug/l
Acetone	B-60	6/8/2015 12:00:00 AM	1071.12	ug/l

Actual image from SGS E-Data web portal – access SGS demonstration website via <https://edata.sgs.com/Demo> username: Demonstration password: Geneva1

WHY SGS?

SGS is the world’s leading inspection, verification, testing and certification company. SGS is recognised as the global benchmark for quality and integrity. With more than 85 000 employees, SGS operates a network of over 1 800 offices and laboratories around the world.

We are constantly looking beyond customers’ and society’s expectations in order to deliver market leading services wherever they are needed. We have a history of undertaking and successfully executing large-scale, complex international projects.

With a presence in every single region around the globe, our people speak the language and understand the culture of the local market, and operate globally in a consistent, reliable and effective manner.

We provide innovative services and solutions for every part of the environmental industry. Our global and local network of offices and laboratories, alongside our dedicated team, allows us to respond to your needs, when and where they occur. Our reputation for independence, excellence and innovation has established us as the market leader in providing services that improve efficiency, reduce risk and deliver competitive advantage for you.

TO FIND OUT MORE ON SGS ENVIRONMENTAL SERVICES CONTACT ENVI@SGS.COM OR VISIT WWW.SGS.COM/ENV



**PARTNER WITH SGS
AND SHAPE YOUR DATA
FOR COST EFFECTIVE
DECISION MAKING**

WWW.SGS.COM

WHEN YOU NEED TO BE SURE

